

Fisheries Information Notice 01-2025

North-West Closed Areas



AN t-ÚDARÁS UM
CHOSAINT
IASCAIGH MHARA

SEA-FISHERIES
PROTECTION
AUTHORITY

The Sea-Fisheries Protection Authority has issued Fisheries Information Notice entitled:
North-West closed areas

Legislative Basis / Relevant Documentation:

- [Regulation \(EU\) 2019/1241 \(Technical Measures Regulation\)](#)
- [Council Regulation \(EC\) 1224/2009 \(Control Regulation\)](#)
- [Commission Implementing Regulation \(EU\) 2022/1614 \(Vulnerable Marine Ecosystems Regulation\)](#)
- [Regulation \(EU\) 2024/2594 \(NEAFC Regulation\)](#)

Terms/ Acronyms	Description
Sensitive habitat	Habitat whose conservation status, including its extent and the condition (structure and function) of its biotic and abiotic components, is adversely affected by pressures arising from human activities, including fishing activities.
FMC	Fisheries Monitoring Centre
VMS	Vessel Monitoring System
VME	Vulnerable Marine Ecosystem
Force majeure	Term that describes a situation where due to a circumstance beyond control, a person cannot fulfil an obligation, e.g. an obligation to comply with a regulatory requirement.



Introduction

The purpose of this document is to provide information to members of the fishing industry on areas off the North-West coast of Ireland which:

- Are permanently closed to fishing.
- Certain gear types are prohibited.
- Are closed at certain times of the year.



Rockall Haddock Bank closed area *Regulation EU 1241/2019 Annex VI part C (4)*

The Rockall haddock bank closed area is found within ICES divisions VIb1 and VIb2. The reason for this closure is to protect juvenile haddock. This area is permanently closed. It is prohibited to use any fishing gear except for longlines.



Blue Ling closed area *EU Regulation 2019/1241 Annex VI part C*

The blue ling (*Molva dypterygia*) closed area is a series of closed areas found in ICES sub area VIa. The reason for this closure is to protect spawning blue ling. Directed fishing for blue ling is prohibited between 1st of March to the 31st.

Vessels are permitted a by-catch of blue ling up to a value of 6 tonnes to be retained and landed each trip. When the threshold of 6 tonnes has been reached the vessel must:

- Immediately stop fishing and exit the area it is present.
- It may not re-enter the area until it has landed all its catch.

“The purpose of this document is to provide information upon **North-West closed areas**. For the avoidance of doubt, this information does not constitute legal advice or analysis and should not be relied upon as such. Whilst every effort is made to ensure accurate and relevant material is published, no responsibility is accepted by, or on behalf of the SPPA, for any errors, omissions or misleading statements on these pages.”



Deep Sea closure *Regulation EU 2024/2594 Annex IV part 8*

The deep sea closure areas are a series of closed areas found in ICES sub areas XIIb, VIb. The reason for this closure is to protect sensitive marine ecosystems. The areas are closed to bottom trawling, bottom set gillnets and bottom set longlines. The areas closed are:

- Hatton Bank
- North- West Rockall
- Empress of Britain Bank
 - Area 1
 - Area 2
 - Area 3
- South- West Rockall
 - Area 1
 - Area
- Logachev Mound
- West Rockall Basin
- Hatton Bank 2
 - Area 1
 - Area 2
- Hatton- Rockall Basin
 - Area 1
 - Area 2

Where, in the course of fishing operations in new and existing bottom fishing areas within the NEAFC Regulatory Area, the quantity of live coral or live sponge caught per gear set exceeds 60 kg of live coral and/or 800 kg of live sponge, the vessel shall inform its flag State, cease fishing and move at least 2 nautical miles away from the position that the evidence suggests is closest to the exact location where this catch was made.



Coral protected areas *Regulation EU 2019/1241 Annex II part B*

The coral protected areas are a group of sensitive habitats. These habitats have been closed to fishing with certain gear types to protect cold water coral reef in these areas. The areas closed are:

- Darwin's Mound

The coral protected areas are permanently closed to:

- Bottom trawls or similar towed nets.
- Bottom set gillnets.
- Entangling nets.
- Trammel nets.
- Bottom set longlines.

Derogation

Pelagic vessels may fish in the coral protected areas provided that they:

- Carry onboard only pelagic gear.
- Carry onboard trawls between 16-79mm.
- Be on a list of vessels authorised to fish in the area.
- Give 4 hours notification of their intention to enter a vulnerable deep-sea habitat to the Irish fisheries monitoring centre (FMC) and report quantities of fish retained on board at the same time.
- Have a fully functioning and operational vessel monitoring system (VMS).
- Make a VMS report every hour.
- Inform the FMC of their departure from the area and notify quantities of fish retained onboard.

Vulnerable Marine Ecosystems (VME) *Regulation EU 2022/1614*

Vulnerable Marine Ecosystems (VME) also exist in this area. For information on VME's please see [FFSU-FC-FIN-08-23 Restrictions on fishing of Deep-Sea Species & Protection of Vulnerable Marine Ecosystems](#)

"The purpose of this document is to provide information upon **North-West closed areas**. For the avoidance of doubt, this information does not constitute legal advice or analysis and should not be relied upon as such. Whilst every effort is made to ensure accurate and relevant material is published, no responsibility is accepted by, or on behalf of the SPPA, for any errors, omissions or misleading statements on these pages."

Fisheries Information Notice 01-2025

North-West Closed Areas



AN t-ÚDARÁS UM
CHOSAINT
IASCAIGH MHARA

SEA-FISHERIES
PROTECTION
AUTHORITY



Transit through all closed areas *Council Regulation EC 1224/2009 Article 50*

The following information applies to all fishing vessel transiting through a closed area but are **not authorised** to fish within the closed area. The FMC monitors vessels in a closed area.

- The vessel has onboard an operational system which alerts the master of entry and exit into a closed area.
- The vessel transmits its location at least once every 30 minutes when in the closed area.
- The speed during transit is not less than six knots except in case of force majeure or adverse conditions.
 - The master must inform the FMC of its flag state.
- All gear must be lashed and stowed during the transit.
 - Nets, weights, and similar gear shall be disconnected from their trawl boards and towing and hauling wires and ropes.
 - Nets which are on or above deck shall be securely lashed and stowed.
 - Longlines shall be stowed in lower decks.

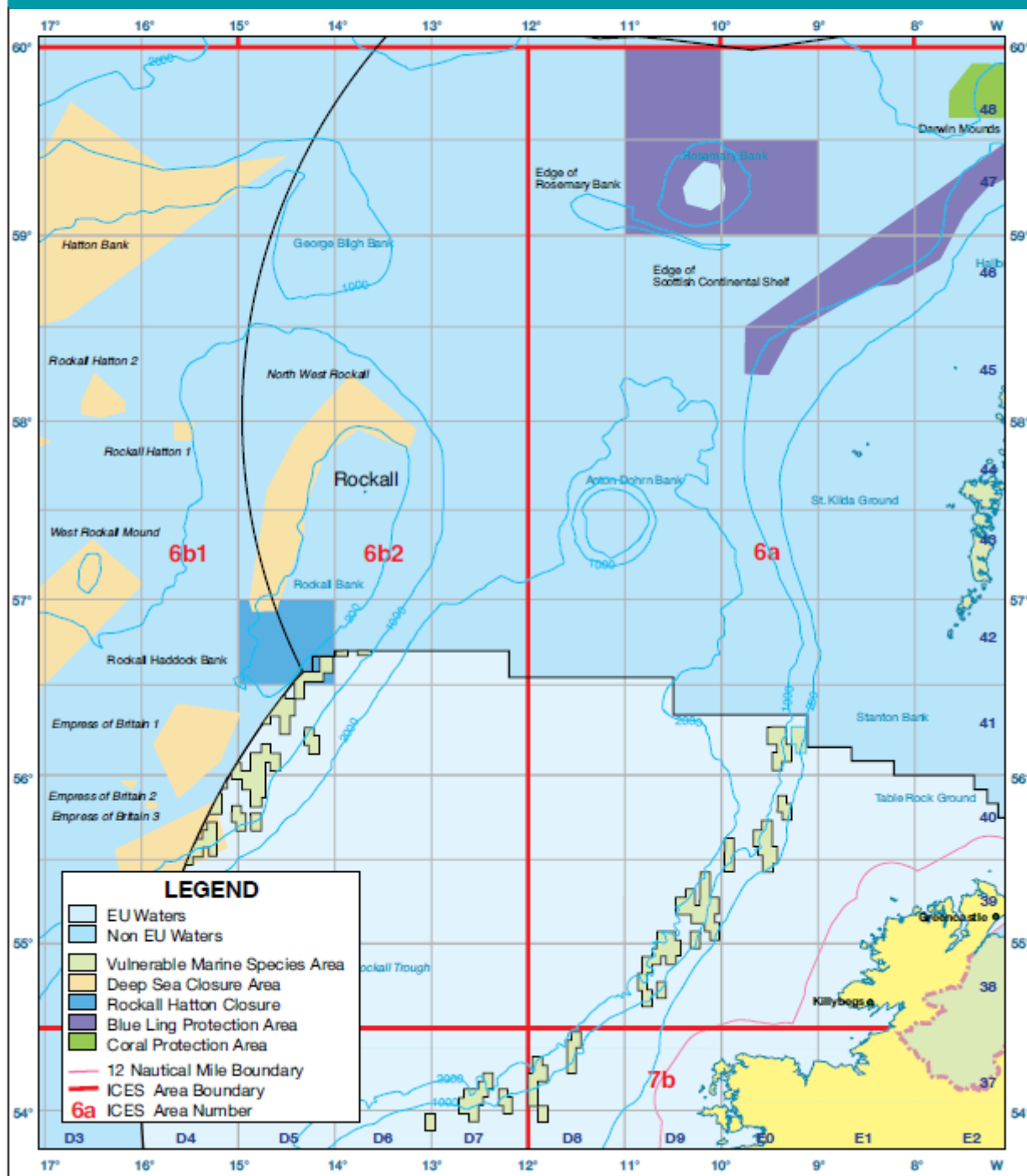
Contact Details

sfpafood&fisheriessupport@sfpa.ie

“The purpose of this document is to provide information upon **North-West closed areas**. For the avoidance of doubt, this information does not constitute legal advice or analysis and should not be relied upon as such. Whilst every effort is made to ensure accurate and relevant material is published, no responsibility is accepted by, or on behalf of the SPPA, for any errors, omissions or misleading statements on these pages.”



Ireland _ North-West Closed Areas



“The purpose of this document is to provide information upon **North-West closed areas**. For the avoidance of doubt, this information does not constitute legal advice or analysis and should not be relied upon as such. Whilst every effort is made to ensure accurate and relevant material is published, no responsibility is accepted by, or on behalf of the SPPA, for any errors, omissions or misleading statements on these pages.”



Rockall Haddock Bank closed area

Rockall Haddock Bank

- 57°00' N, 15°00' W
- 57°00' N, 14°00' W
- 56°30' N, 14°00' W
- 56°30' N, 15°00' W
- 57°00' N, 15°00' W

Deep Sea closure

Hatton Bank

- 59° 26' N, 14° 30' W
- 59° 12' N, 15° 08' W
- 58° 34' N, 16° 47' W
- 58° 29' N, 17° 25' W
- 58° 30' N, 17° 52' W
- 58° 03' N, 17° 52' W
- 58° 03' N, 17° 30' W
- 57° 55' N, 17° 30' W
- 57° 45' N, 19° 15' W
- 58° 11.15' N, 18° 57.51' W
- 58° 11.57' N, 19° 11.97' W
- 58° 27.75' N, 19° 11.65' W
- 58° 39.09' N, 19° 14.28' W
- 58° 38.11' N, 19° 01.29' W
- 58° 53.14' N, 18° 43.54' W
- 59° 00.29' N, 18° 01.31' W
- 59° 08.01' N, 17° 49.31' W
- 59° 08.75' N, 18° 01.47' W
- 59° 15.16' N, 18° 01.56' W
- 59° 24.17' N, 17° 31.22' W
- 59° 21.77' N, 17° 15.36' W
- 59° 26.91' N, 17° 01.66' W
- 59° 42.69' N, 16° 45.96' W
- 59° 20.97' N, 15° 44.75' W
- 59° 21' N, 15° 40' W
- 59° 26' N, 14° 30' W

North-West Rockall

- 57° 00' N, 14° 53' W
- 57° 37' N, 14° 42' W
- 57° 55' N, 14° 24' W
- 58° 15' N, 13° 50' W
- 57° 57' N, 13° 09' W
- 57° 50' N, 13° 14' W
- 57° 57' N, 13° 45' W
- 57° 49' N, 14° 06' W
- 57° 29' N, 14° 19' W
- 57° 22' N, 14° 19' W
- 57° 00' N, 14° 34' W
- 56° 56' N, 14° 36' W
- 56° 56' N, 14° 51' W
- 57° 00' N, 14° 53' W

“The purpose of this document is to provide information upon **North-West closed areas**. For the avoidance of doubt, this information does not constitute legal advice or analysis and should not be relied upon as such. Whilst every effort is made to ensure accurate and relevant material is published, no responsibility is accepted by, or on behalf of the SPPA, for any errors, omissions or misleading statements on these pages.”



Empress of Britain Bank

- **Area 1**
 - 56° 24' N, 15° 37' W
 - 56° 21' N, 14° 58' W
 - 56° 04' N, 15° 10' W
 - 55° 51' N, 15° 37' W
 - 56° 10' N, 15° 52' W
 - 56° 24' N, 15° 37' W
- **Area 2**
 - 55° 56.90' N, 16° 11.30' W
 - 55° 58.20' N, 16° 11.30' W
 - 55° 58.30' N, 16° 02.80' W
 - 55° 56.90' N, 16° 02.80' W
 - 55° 56.90' N, 16° 11.30' W
- **Area 3**
 - 55° 49.90' N, 15° 56.00' W
 - 55° 48.50' N, 15° 56.00' W
 - 55° 48.30' N, 15° 50.60' W
 - 55° 49.60' N, 15° 50.60' W
 - 55° 49.90' N, 15° 56.00' W

South-West Rockall

- **Area 1**
 - 55° 58.16' N, 16° 13.18' W
 - 55° 58.24' N, 16° 02.56' W
 - 55° 54.86' N, 16° 05.55' W
 - 55° 58.16' N, 16° 13.18' W
- **Area 2**
 - 55° 55.86' N, 15° 40.84' W
 - 55° 51.00' N, 15° 37.00' W
 - 55° 47.86' N, 15° 53.81' W
 - 55° 49.29' N, 15° 56.39' W
 - 55° 55.86' N, 15° 40.84' W

Hatton- Rockall Basin

- **Area 1**
 - 58° 00.15' N, 15° 27.23' W
 - 58° 00.15' N, 15° 38.26' W
 - 57° 54.19' N, 15° 38.26' W
 - 57° 54.19' N, 15° 27.23' W
 - 58° 00.15' N, 15° 27.23' W
- **Area 2**
 - 57° 59.96' N, 19° 05.05' W
 - 57° 45.00' N, 19° 15.00' W
 - 57° 50.07' N, 18° 23.82' W
 - 57° 31.13' N, 18° 21.28' W
 - 57° 14.09' N, 19° 28.43' W
 - 57° 02.21' N, 19° 27.53' W
 - 56° 53.12' N, 19° 28.97' W
 - 56° 50.22' N, 19° 33.62' W

Hatton Bank 2

- **Area 1**
 - 57° 51.76' N, 18° 05.87' W
 - 57° 55.00' N, 17° 30.00' W
 - 58° 03.00' N, 17° 30.00' W
 - 57° 53.10' N, 16° 56.33' W
 - 57° 35.11' N, 18° 02.01' W
 - 57° 51.76' N, 18° 05.87' W
- **Area 2**
 - 57° 59.96' N, 19° 05.05' W
 - 57° 45.00' N, 19° 15.00' W
 - 57° 50.07' N, 18° 23.82' W
 - 57° 31.13' N, 18° 21.28' W
 - 57° 14.09' N, 19° 28.43' W
 - 57° 02.21' N, 19° 27.53' W
 - 56° 53.12' N, 19° 28.97' W

"The purpose of this document is to provide information upon **North-West closed areas**. For the avoidance of doubt, this information does not constitute legal advice or analysis and should not be relied upon as such. Whilst every effort is made to ensure accurate and relevant material is published, no responsibility is accepted by, or on behalf of the SFPA, for any errors, omissions or misleading statements on these pages."



— 56° 46.68' N, 19° 53.72' W	— 56° 50.22' N, 19° 33.62' W
— 57° 00.04' N, 20° 04.22' W	— 56° 46.68' N, 19° 53.72' W
— 57° 10.31' N, 19° 55.24' W	— 57° 00.04' N, 20° 04.22' W
— 57° 32.67' N, 19° 52.64' W	— 57° 10.31' N, 19° 55.24' W
— 57° 46.68' N, 19° 37.86' W	— 57° 32.67' N, 19° 52.64' W
— 57° 59.96' N, 19° 05.05' W	— 57° 46.68' N, 19° 37.86' W
	— 57° 59.96' N, 19° 05.05' W
Logachev Mound	West Rockall Basin
— 55° 17' N, 16° 10' W	— 57° 20' N, 16° 30' W
— 55° 34' N, 15° 07' W	— 57° 05' N, 15° 58' W
— 55° 50' N, 15° 15' W	— 56° 21' N, 17° 17' W
— 55° 33' N, 16° 16' W	— 56° 40' N, 17° 50' W
— 55° 17' N, 16° 10' W	— 57° 20' N, 16° 30' W
Blue Ling closed area	
Edge of Scottish continental shelf	Edge of Rosemary bank
— 59°58' N, 07°00' W	— 60°00' N, 11°00' W
— 59°55' N, 06°47' W	— 59°00' N, 11°00' W
— 59°51' N, 06°28' W	— 59°00' N, 09°00' W
— 59°45' N, 06°38' W	— 59°30' N, 09°00' W
— 59°27' N, 06°42' W	— 59°30' N, 10°00' W
— 59°22' N, 06°47' W	— 60°00' N, 10°00' W
— 59°15' N, 07°15' W	— 60°00' N, 11°00' W
— 59°07' N, 07°31' W	
— 58°52' N, 07°44' W	
— 58°44' N, 08°11' W	
— 58°43' N, 08°27' W	
— 58°28' N, 09°16' W	
— 58°15' N, 09°32' W	
— 58°15' N, 09°45' W	
— 58°30' N, 09°45' W	
— 59°30' N, 07°00' W	
— 59°58' N, 07°00' W	
Coral protected areas	
Darwin Mound	
— 59°54' N, 6°55' W	— 59°37' N, 7°39' W
— 59°47' N, 6°47' W	— 59°45' N, 7°39' W
— 59°37' N, 6°47' W	— 59°54' N, 7°25' W

“The purpose of this document is to provide information upon **North-West closed areas**. For the avoidance of doubt, this information does not constitute legal advice or analysis and should not be relied upon as such. Whilst every effort is made to ensure accurate and relevant material is published, no responsibility is accepted by, or on behalf of the SFPA, for any errors, omissions or misleading statements on these pages.”